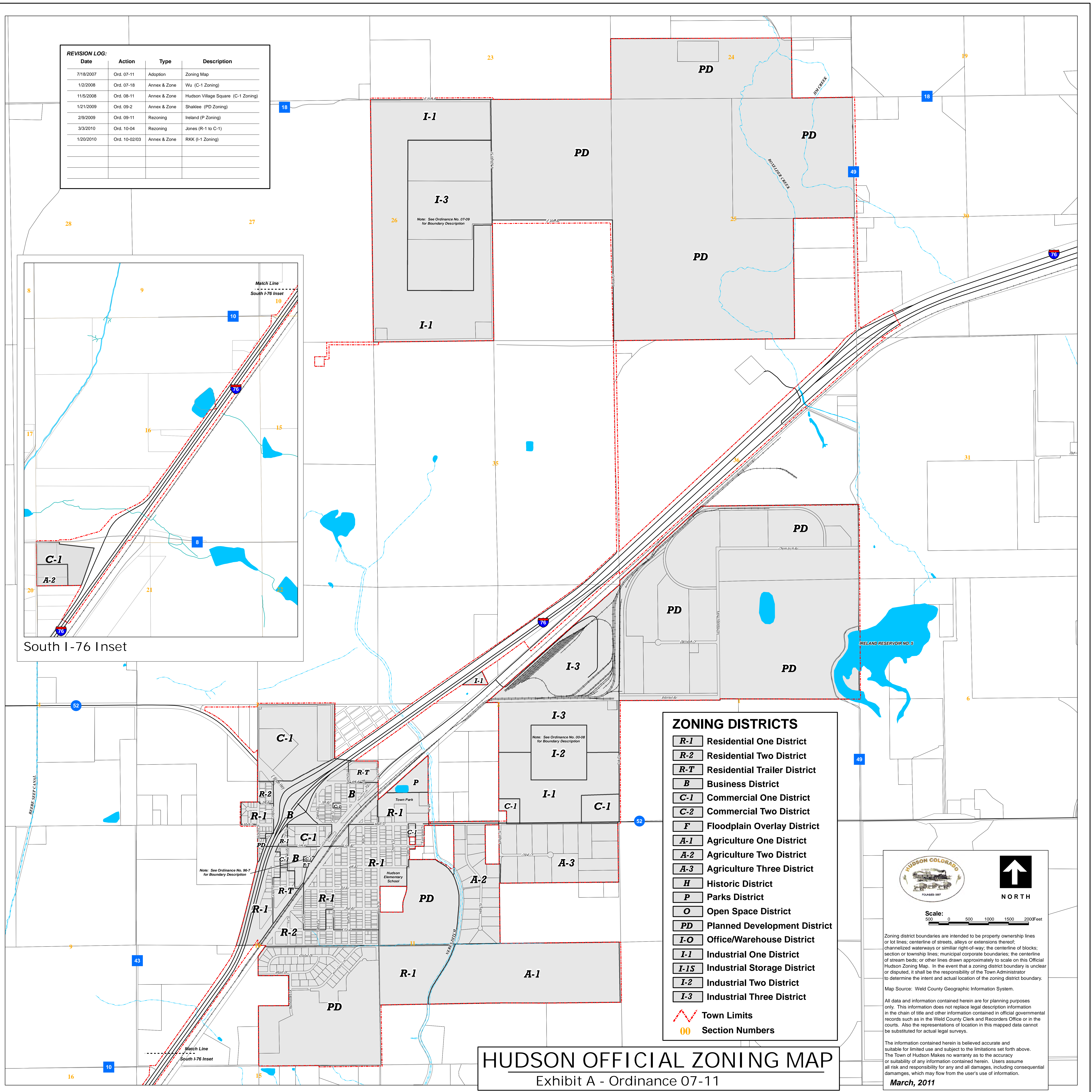
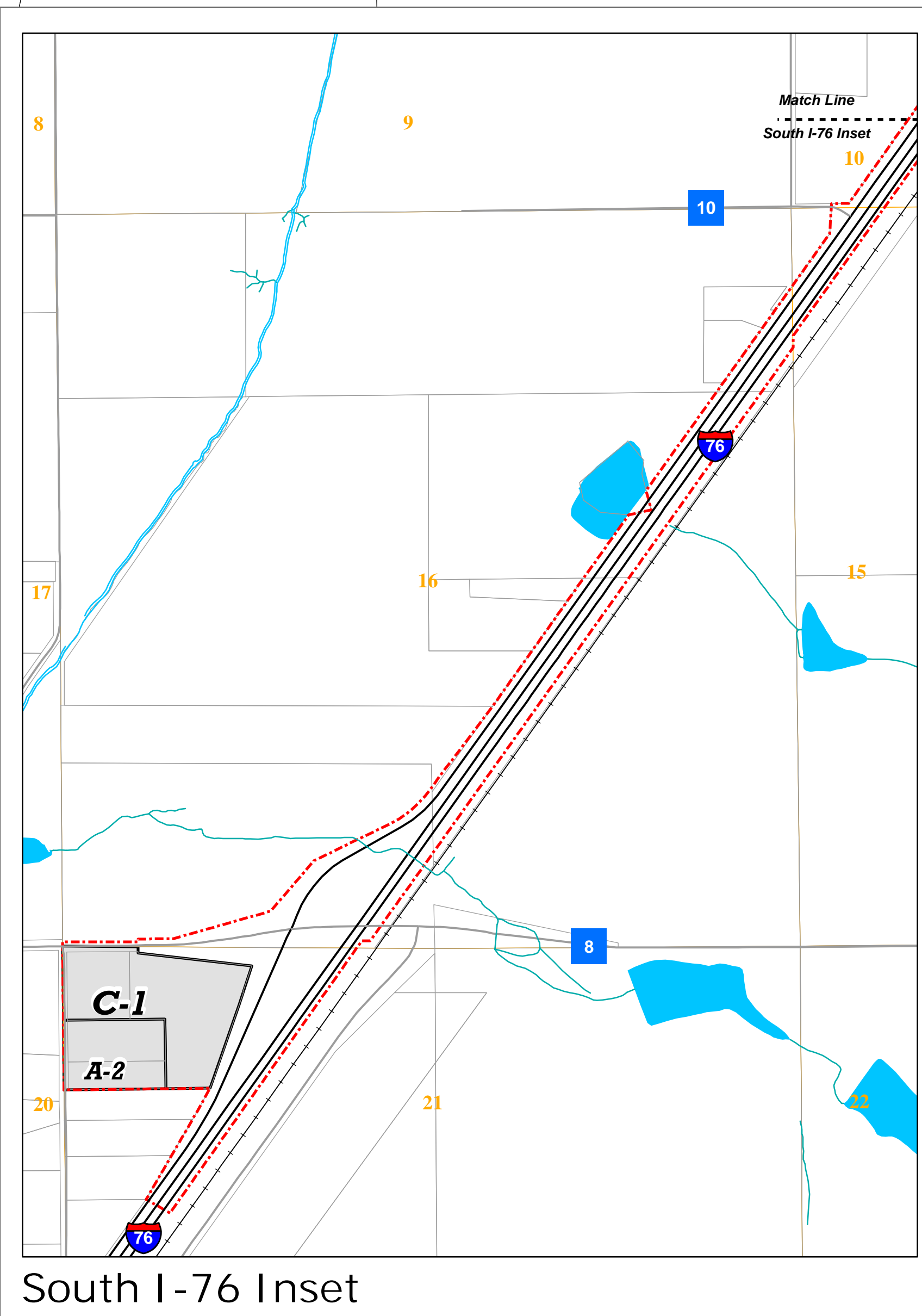
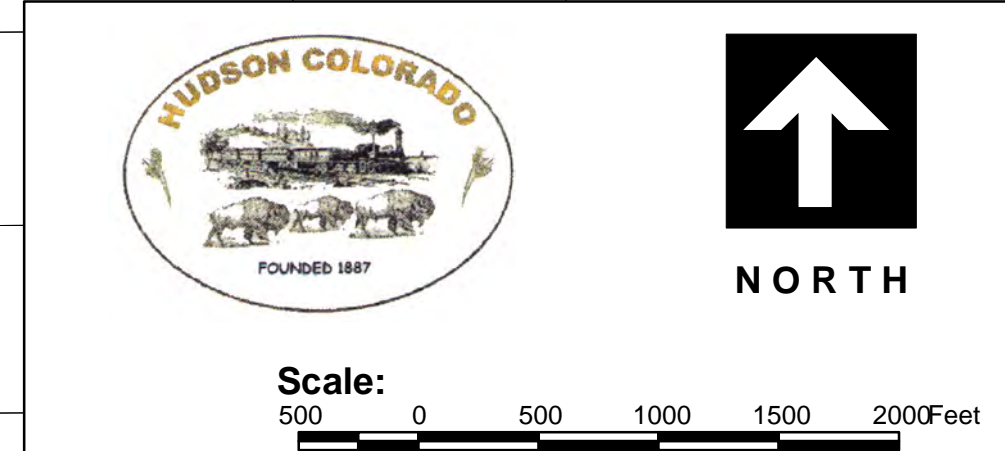


**REVISION LOG:**

Date	Action	Type	Description
7/18/2007	Ord. 07-11	Adoption	Zoning Map
1/2/2008	Ord. 07-18	Annex & Zone	Wu (C-1 Zoning)
11/5/2008	Ord. 08-11	Annex & Zone	Hudson Village Square (C-1 Zoning)
1/21/2009	Ord. 09-2	Annex & Zone	Shaklee (PD Zoning)
2/9/2009	Ord. 09-11	Rezoning	Ireland (P Zoning)
3/3/2010	Ord. 10-04	Rezoning	Jones (R-1 to C-1)
1/20/2010	Ord. 10-02/03	Annex & Zone	RKK (I-1 Zoning)



- ZONING DISTRICTS**
- R-1** Residential One District
  - R-2** Residential Two District
  - R-T** Residential Trailer District
  - B** Business District
  - C-1** Commercial One District
  - C-2** Commercial Two District
  - F** Floodplain Overlay District
  - A-1** Agriculture One District
  - A-2** Agriculture Two District
  - A-3** Agriculture Three District
  - H** Historic District
  - P** Parks District
  - O** Open Space District
  - PD** Planned Development District
  - I-O** Office/Warehouse District
  - I-1** Industrial One District
  - I-1S** Industrial Storage District
  - I-2** Industrial Two District
  - I-3** Industrial Three District
- Town Limits**
- 00** Section Numbers



Zoning district boundaries are intended to be property ownership lines or lot lines; centerline of streets, alleys or extensions thereof; channelized waterways or similar right-of-way; the centerline of blocks; section or township lines; municipal corporate boundaries; the centerline of stream beds; or other lines drawn approximately to scale on this Official Hudson Zoning Map. In the event that a zoning district boundary is unclear or disputed, it shall be the responsibility of the Town Administrator to determine the intent and actual location of the zoning district boundary.

Map Source: Weld County Geographic Information System.

All data and information contained herein are for planning purposes only. This information does not replace legal description information in the chain of title and other information contained in official governmental records such as in the Weld County Clerk and Recorders Office or in the courts. Also the representations of location in this mapped data cannot be substituted for actual legal surveys.

The information contained herein is believed accurate and suitable for limited use and subject to the limitations set forth above. The Town of Hudson Makes no warranty as to the accuracy or suitability of any information contained herein. Users assume all risk and responsibility for any and all damages, including consequential damages, which may flow from the user's use of information.

**March, 2011**

**HUDSON OFFICIAL ZONING MAP**  
Exhibit A - Ordinance 07-11